

Endymion Road, Brixton, SW2

2 bedroom flat - conversion for sale

£450,000

Leasehold

Property Details

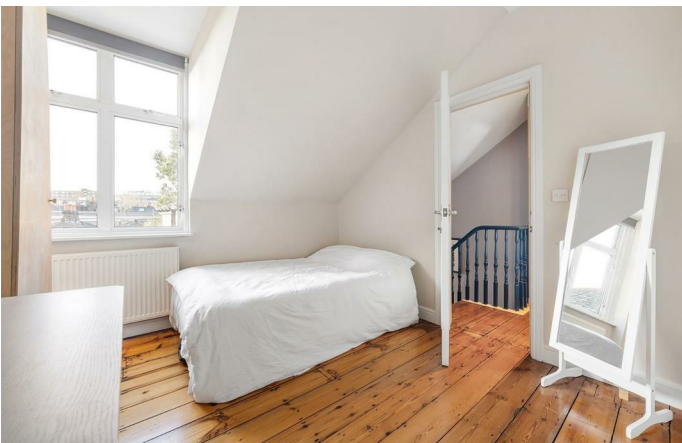
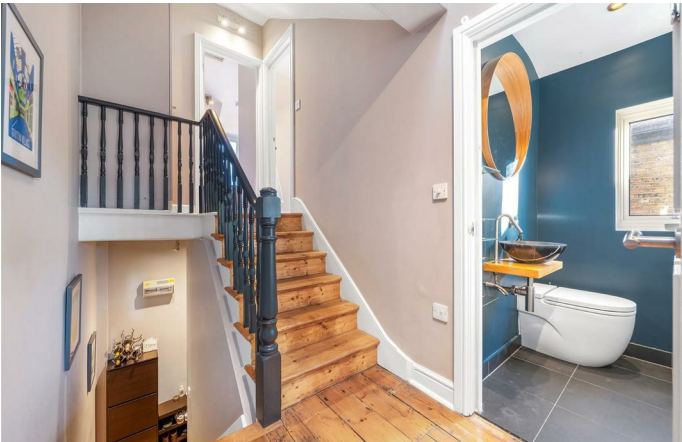
This well-presented two-bedroom flat occupies the second floor of a Victorian house, accessed via a private internal staircase rising to a half landing. The bright, open-plan reception room at the front forms the heart of the home, featuring a striking exposed brick chimney breast with a decorative fireplace recess and built-in log store, while a large window floods the space with natural light. The kitchen runs along one wall, finished in sleek white cabinetry with integrated appliances, a tiled splashback, Neff oven, and gas hob, complementing the open-plan layout. Polished timber floorboards extend throughout, adding warmth and character. The principal bedroom at the rear offers a peaceful retreat with calming deep blue walls and leafy views, while the second double bedroom sits adjacent to the reception. Centrally positioned, the bathroom continues the deep blue palette with white subway tiles, a bath with overhead shower, window, and vertical radiator. Additional highlights include loft access, high insulation, and Nest thermostats, ensuring comfort throughout.

Council tax band C

EPC rating (null)

Features

- Two double bedrooms
- Victorian top floor period conversion
- Open plan kitchen/ reception
- Polished floorboards
- Characterful features
- Bright and airy
- Local parade of shops and cafes moments away
- Sought after street in the LTN
- Short walk to Brockwell Park and central Brixton
- Chain- free. Right to Manage.



Endymion Road, Brixton, SW2

Endymion Road, SW2

2 Bedroom Flat

APPROXIMATE GROSS INTERNAL AREA: 573 SQ FT / 53.2 SQ M



While we try our very best, floor plans are produced as a guide only and we take no responsibility for the precise accuracy with which any property is represented.

Endymion Road, Brixton, SW2

